

WA State Division of Developmental Disabilities

Telling our Story through Standardized Assessment



A presentation to the IACC Services Workshop
November 8, 2010
Rockville, MD



Who we are ...

WA State Population = 6.7 million

WA State DD Population = 81,000 (estimate)

Division Caseload = 39,000

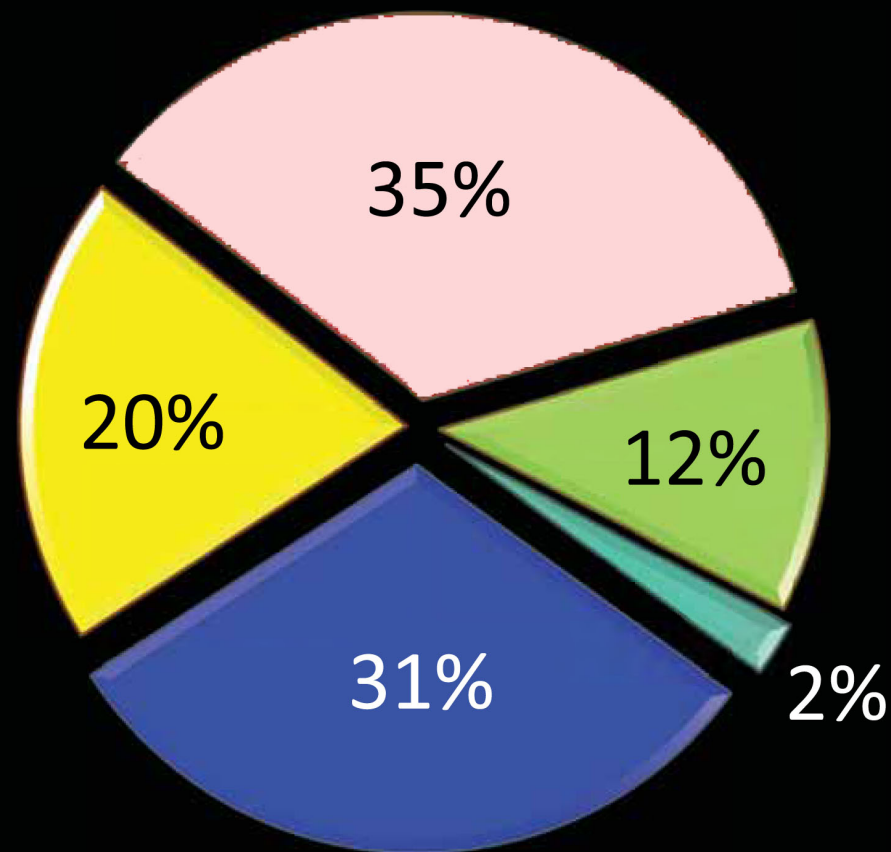
■ HCBS Waiver (11,975)

■ Non-Waiver Paid (7,634)

■ No-Paid Services
(13,530)

■ Birth to Age 3
(4,743)

■ RHCs (889)





Where we came from ...



Performance Audit Findings 2003

“DDD Caseloads are growing, procedures are poorly defined and effective automated systems to help case managers manage their caseloads are missing.”

“ Because an assessment is not consistently applied, it is impossible to determine if clients with similar needs are receiving similar services.”



Audit Expectations

Build an assessment process that:

- Measures the unique support needs of people with developmental disabilities
- Ensures that people with similar support needs receive similar levels of service
- Uses existing technology that has been proved and tested
- That supports all of the DDD programs and services we deliver



Challenges

- Identifying tools that support our values & principles
- Growing caseloads and declining budgets
- Prioritizing increased service demand
- Legacy systems & inefficient processes
- Increasing reliance on Medicaid funding
- Equipping workforce with appropriate skills
- Legal expectations & litigation risks



What we did ...

How is the Assessment Organized?

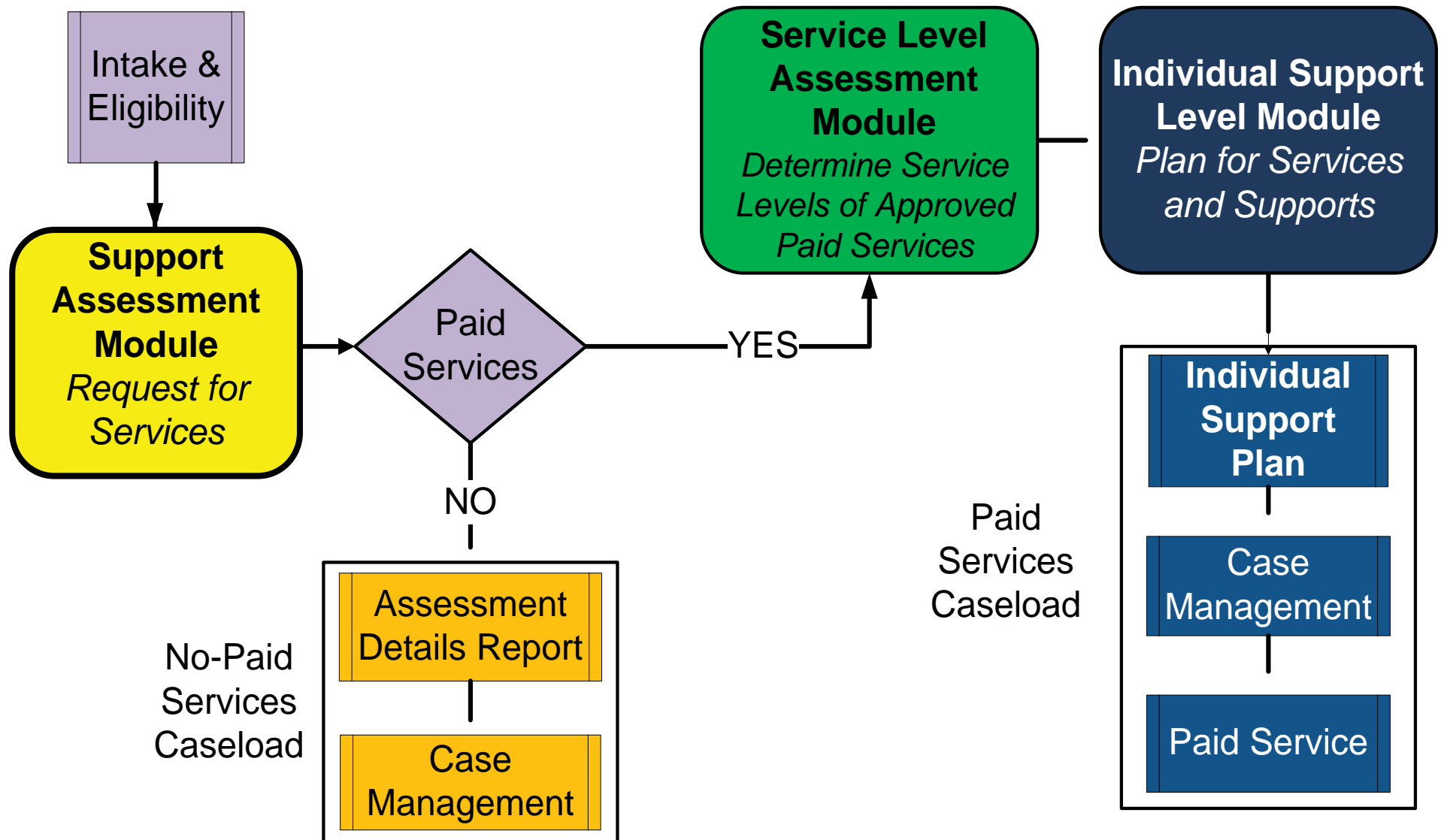
Client Details

Support Assessment

Service Level Assessment

Individual Support Plan

Service Delivery Process





Support Assessment

- Collects a common set of information
- Promotes Consistency
- Determines ICF/MR eligibility
- Determines path for paid and no-paid services
- Acuties Inform Respite Algorithm

Support Assessment

**Support Assessment for Children
Or
Supports Intensity Scale for Adults**

**Exceptional Medical
&
Exceptional Behavioral
Support Needs Scales**

Protective Supervision

DDD Caregiver Status



Support Assessment

Why the Supports Intensity Scale (SIS)?

- *Enhances credibility in our state's assessment process.*
- *Complements our Residential and County Services Guidelines.*
- *Promotes consistency and fairness through a standardized approach*
- *Measures employment support needs.*
- *Allows data comparisons to be made with other states and nations*

Support Assessment – Acuity Scales

Activities of Daily Living

- Eating
- Toileting
- Personal Hygiene

Mobility Acuity

- Moving Around

Interpersonal Acuity

- Communication
- Relationships
- Social Skills

Medical Acuity

- Exceptional Medical Needs

Behavioral Acuity

- Prominent Behavior
- Frequency
- Severity
- Assistance

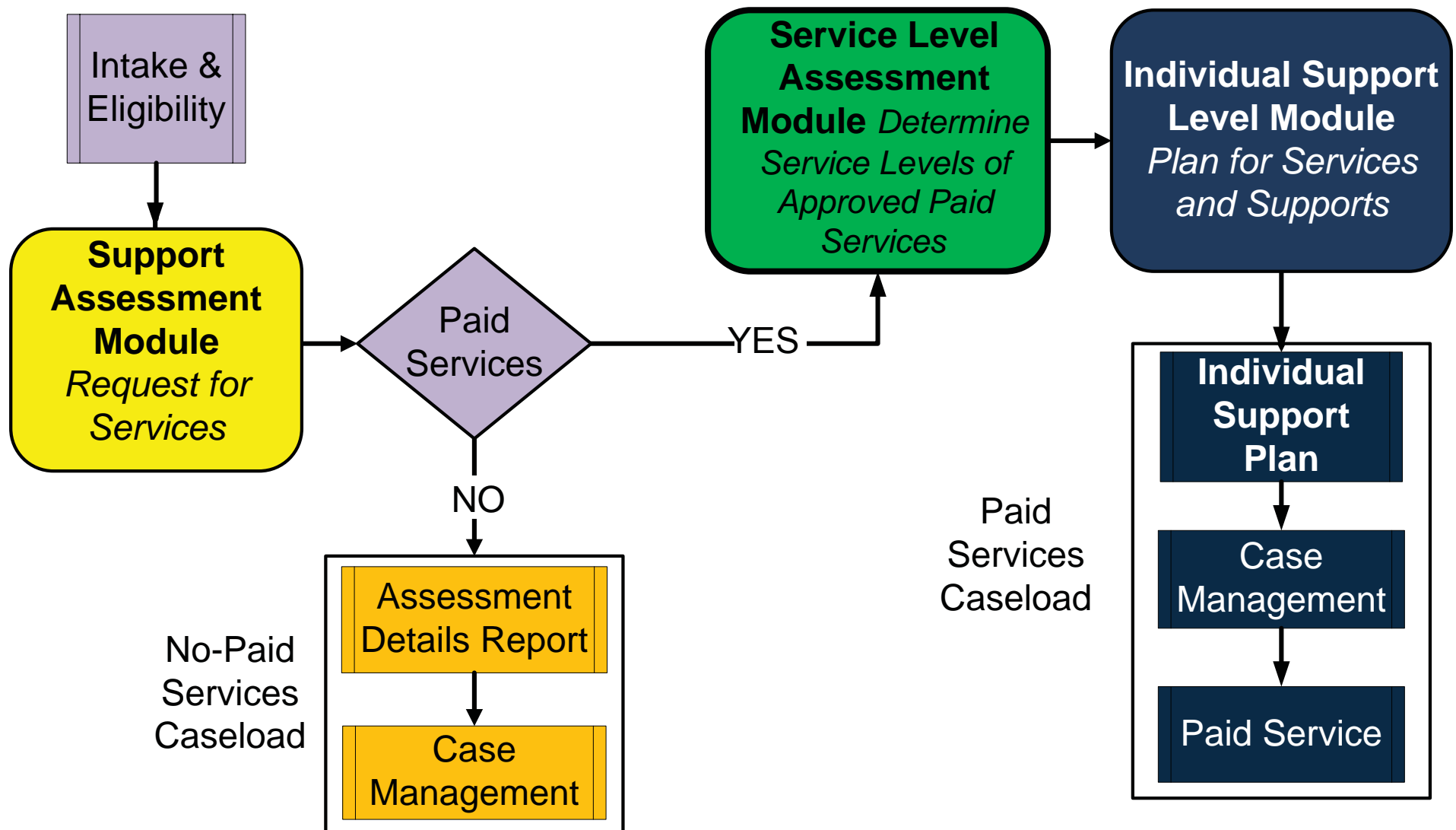
Protective Supervision

- Monitoring
- Unfamiliar Situations
- Ability to Summon Help

Caregiver Status

- Caregiver Stress
- Caregiver

Service Delivery Process

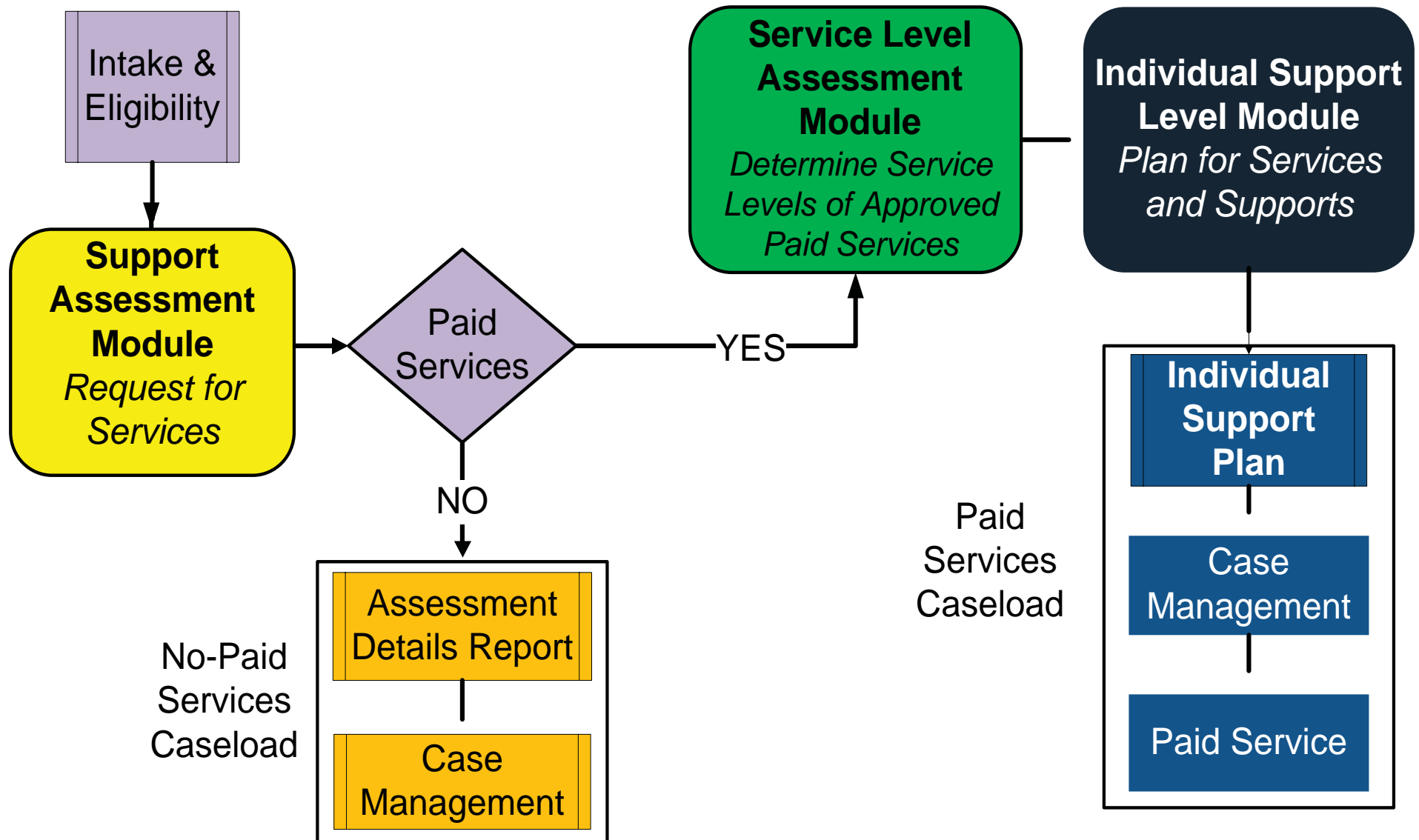




Service Level Assessment

- Different paths based on approved service
- Collects specific health related information that is important to service providers
- Gathers program specific information
- Calculates service eligibility, levels and rates for:
 - *Personal Care*
 - *Individual Family Support*
 - *Residential Services*
 - *Employment (Planned for 2011)*

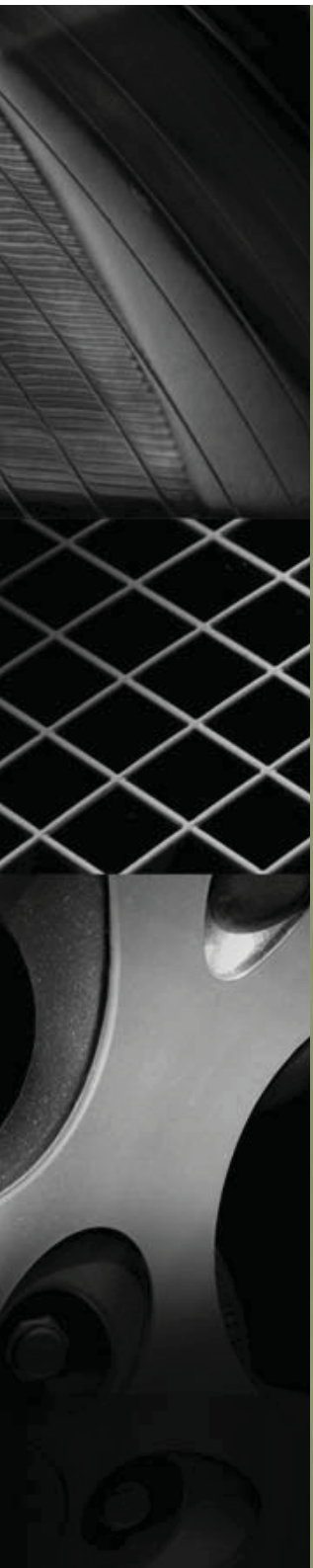
Service Delivery Process





Individual Support Plan

- Assessment information populates into the ISP
- Health and welfare needs identified
- Planning team identifies how support needs will be met
- ISP approves paid service(s) to be authorized
- ISP may be amended as needed.



Here we are today...!



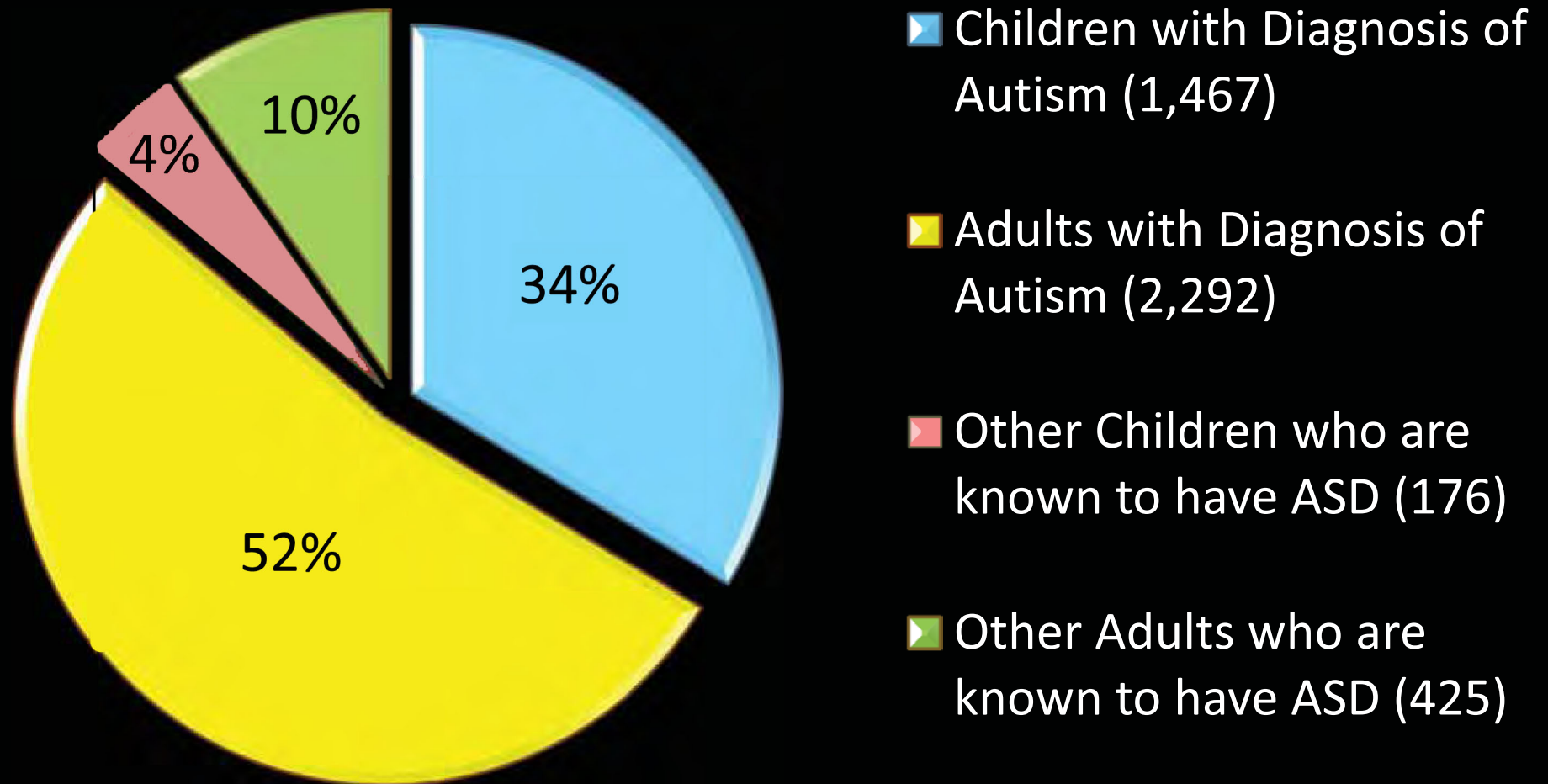
Standardized Assessment Benefits

- Supports DDD Values and Principles
- Improved work process to support case management
- Improved methods to promote fairness and objectivity
- Improved support and service planning process
- Greater accountability for public funding
- Ready access to client information for analysis
- Data informed decision making



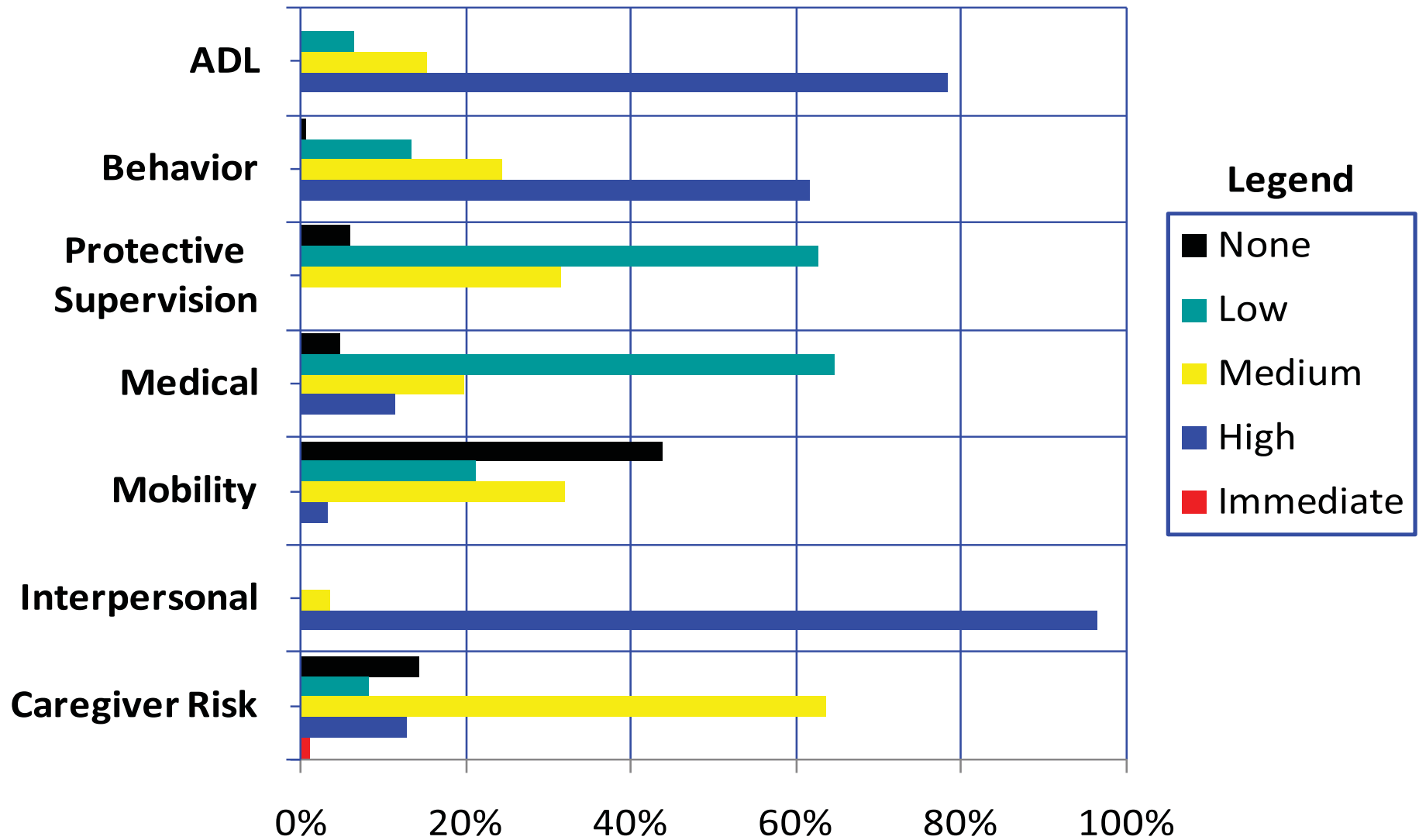
Data Example

Individuals with a Diagnosis of Autism or ASD (4360)

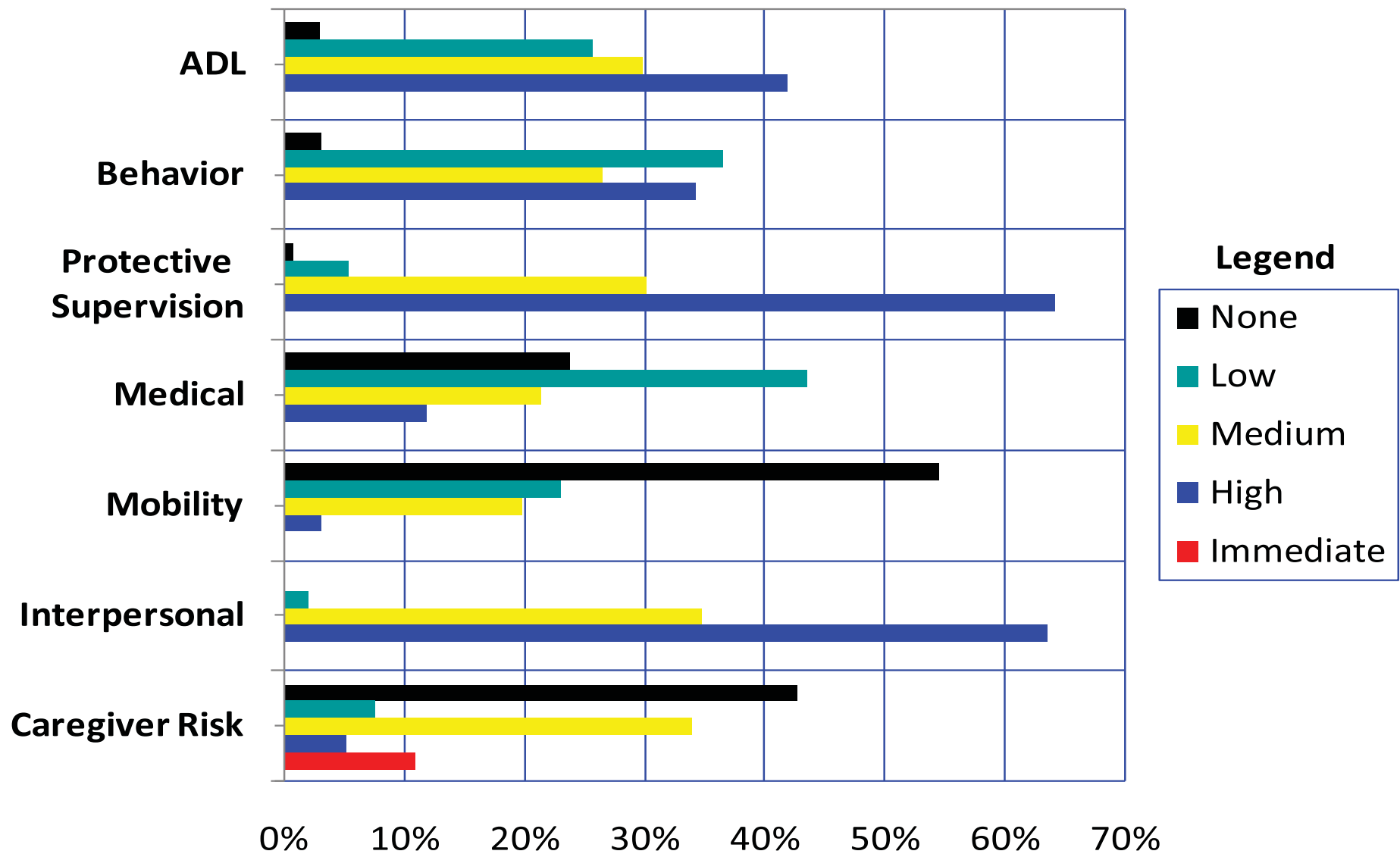


Individuals diagnosed with ASD meet Washington State's eligibility requirements through another qualifying condition such as mental retardation

Acuity Levels of Children with Autism



Acuity Levels of Adults with Autism





Advice to our fellow travelers ...



Collaborative Efforts

- Involved stakeholders
- Extensive communication efforts
- Developed rules governing assessment
- Solicited information from other states and professional organizations

Contacts:

Don Clintsman

don.clintsman@dshs.wa.gov

(360) 725 - 3421

WA State Division of Developmental Disabilities

Telling our Story through Standardized Assessment

Contact:

Don Clintsman

don.clintsman@dshs.wa.gov

(360) 725 - 3421

